

Q4 A pentagonal pyramid side of base 30 mm, axis 60mm is resting on its base on HP with one edge of base parallel to VP and nearer to VP. A vertical section plane inclined at 45° to VP cuts the pyramid at a distance of 9 mm from the axis. Draw

Sectional front view

3

Top view

3

True shape of section

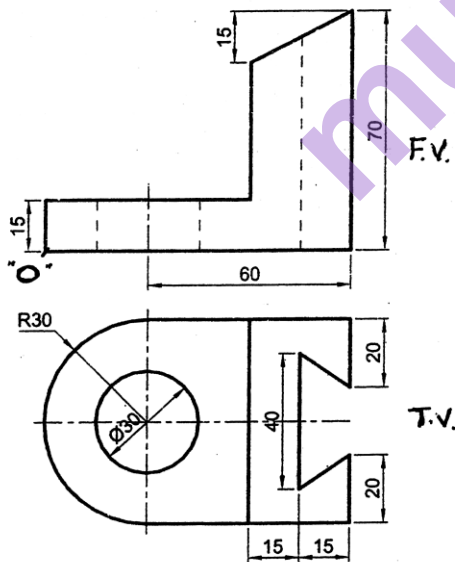
3

and development of lateral surface of retained part of the pyramid.

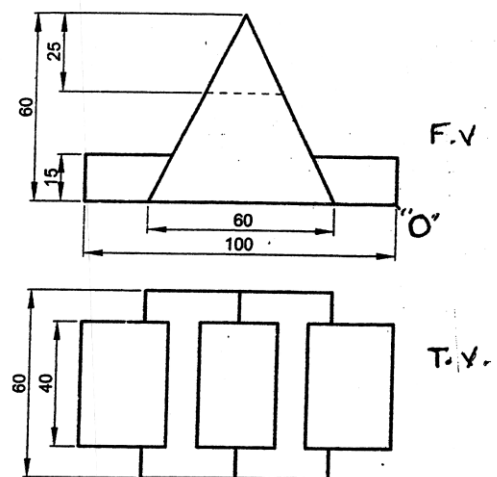
6

Q5 a) draw the projections of a cylinder 60 mm diameter and 70 mm long, lying on HP on its curved surface with its axis inclined at 30° to VP. (and parallel to HP) (Stage 1: 2 marks, Stage 2: 4 marks)

b) The front view and top view of an object are shown in figure below. Draw its isometric view.



Q.5 (b)



Q.6 (b)

- Q6 a)** The top view of a 75 m long line AB measures 65 mm, while the length of its front view is 50 mm. It's one end A is in the HP and 12 mm in front of VP. Draw its projections and determine its inclinations with HP and VP. **8**
- b)** The front view and top view of an object are shown in figure above. Draw its isometric view. **7**
